



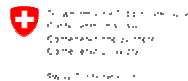
endure

diversifying crop protection

FOOD
QUALITY
AND
SAFETY



ACTA



Agronomic Changem-Widerwall Research Station ACW
Agronomic Liebfeld-Peiskus Research Station ALP
Agronomic Rottenholz-Tänikon Research Station ARI



Danish Agricultural Advisory Service

bba
Biologische Bundesanstalt
für Land- und Forstwirtschaft



IBMA
Institut für Biologische
Mehrwertschöpfung



INRA

INRA Transfert
Filiale de l'INRA



**Scuola Superiore
San'Anna**
di Studi Universitari e di Perfezionamento



WAGENINGEN UR
For quality of life



***Societal expectations for
safe food and environmentally
friendly agriculture***



Area 5.4.6 - Safer and environmentally friendly
production methods
and technologies and healthier food stuffs.
Topic 1 - Reducing the use of plant protection
products.

***Crop protection:
fragmented scientific
knowledge and R&D
community***



EC Contribution
11,2 M €

End-users
(farmers, advisers), industry,
policy-makers, society at large...



Main objectives



bring together

available research capacity and resources
Programme, facilities, mobility

enhance

the research-to-R&D innovation process
Researchers → extension, practitioners

bring in

other sectors: industry, policy making,
civil society

pass on

knowledge, know-how and resources
through training and education

endure

by building a sustainable and trans-national
institution

Consortium composition



FOOD QUALITY AND SAFETY

Research

- INRA - FR

- BBA - DE

- RRES - UK

- CIRAD - FR

- CNR - IT

- AGROS - CH

- WUR - NL

- IHAR - PL

Education & R

- SSSUP - IT

- SZIE - HU

- UdL - SP

- AU - DK

Extension

- DAAS - DK

- ACTA - FR

Management

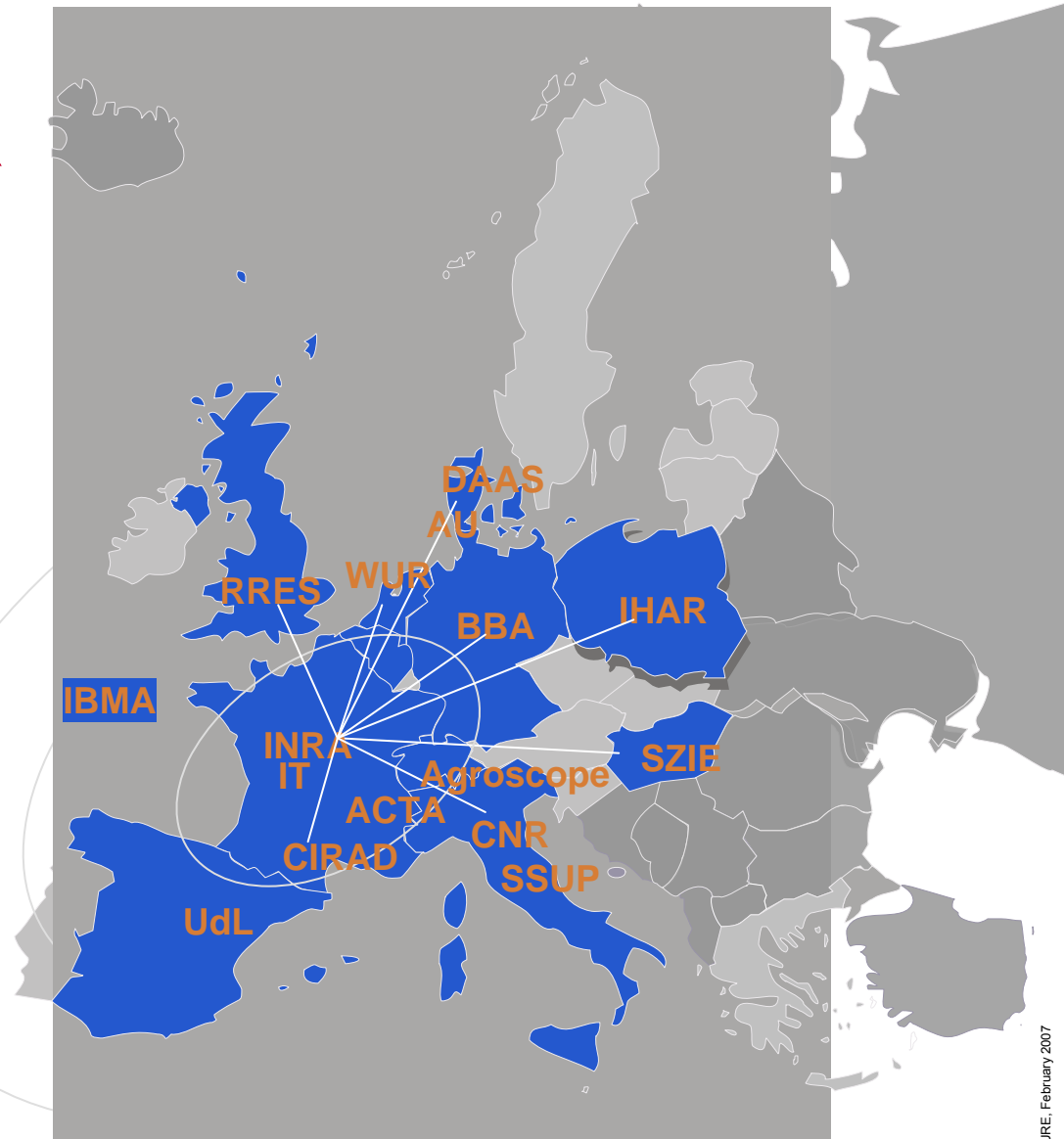
- IT - FR

Industry

- IBMA - Int.

and...

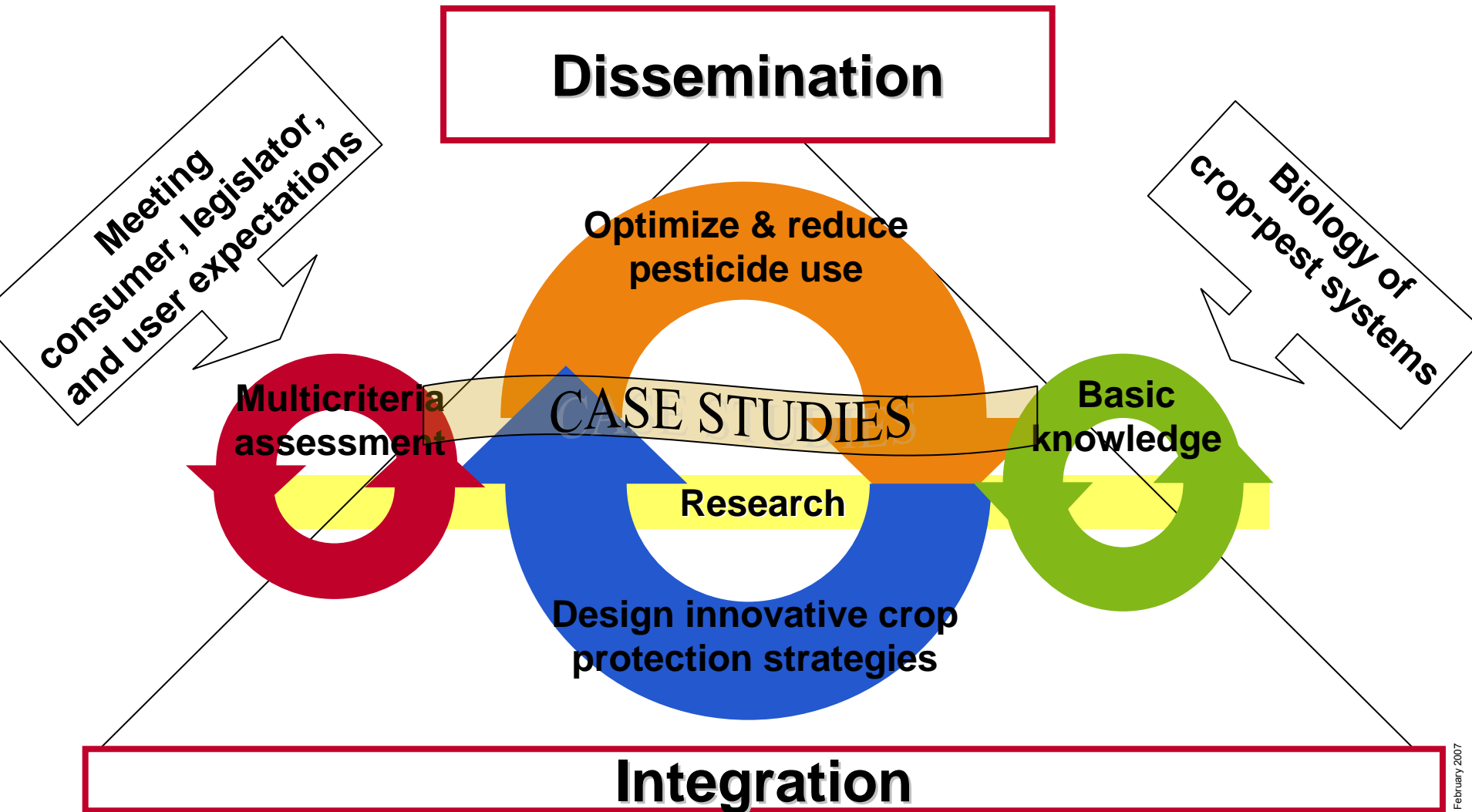
- INCO countries



vt1

DIAS est AU et non AU-FAS.
+ mise en forme DK
Vincent Troillard; 12-02-2007

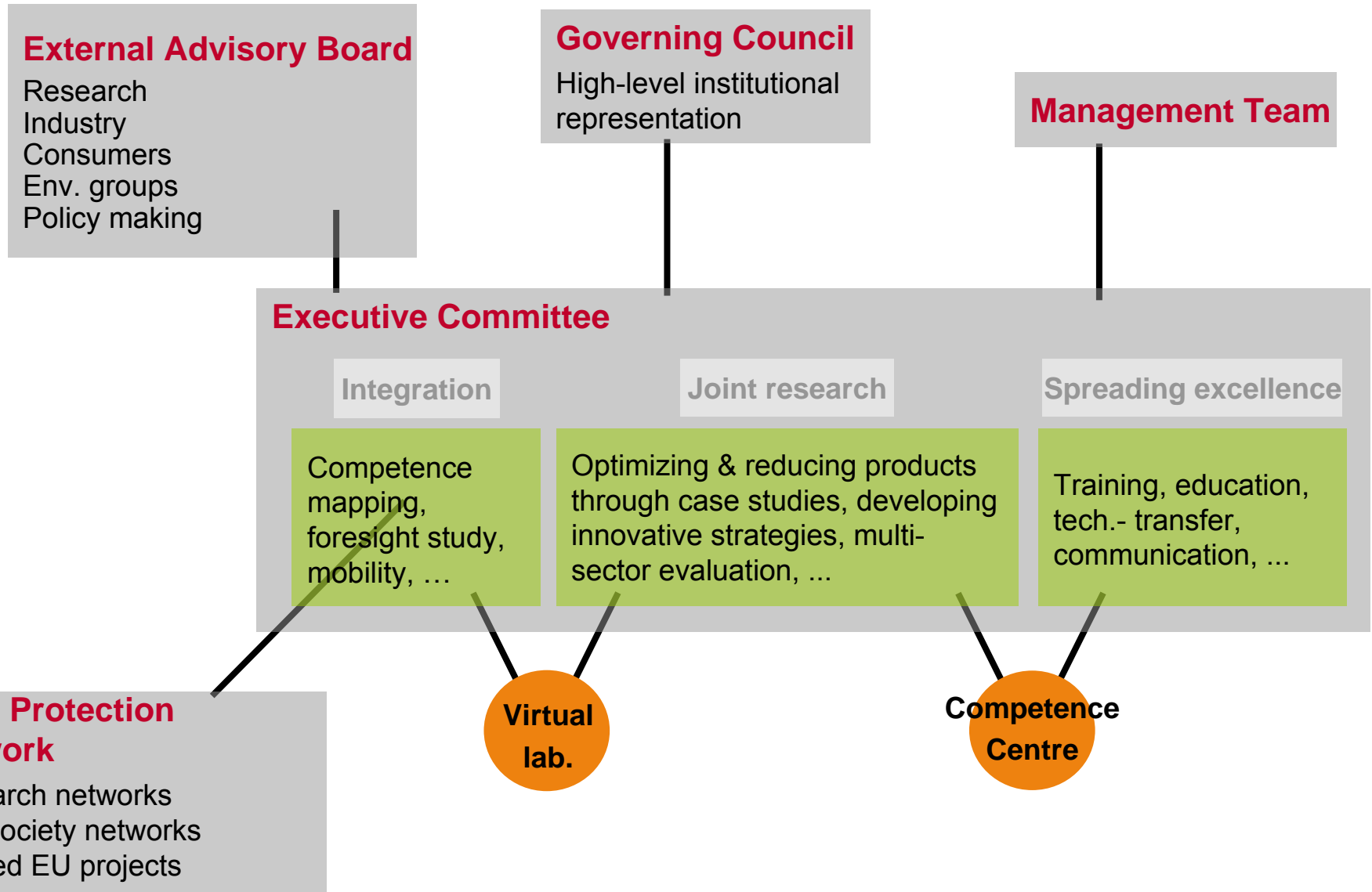
Project structure



General organisation



FOOD QUALITY AND SAFETY




[About crop protection](#)
[Research activities](#)
[Meetings, events](#)
[Human resources](#)
[Library](#)
[▶ Objectives](#)
[▶ Activities](#)
[▶ Participants](#)
[▶ Partners](#)
[▶ Newsletter](#)
[▶ Rss](#)
[▶ Partners only](#)

Search

Go



You are here : [Home](#) > [What is ENDURE ?](#)

■ What is ENDURE ?

Although pesticides continue to play a valuable role in crop protection, there is general agreement that strategies exploiting a more diverse range of tactics are likely to prove more sustainable. Supporting these changes requires that new technologies and practices are proposed to the producers. It necessitates to anticipate or break down barriers for the development of innovations and to set up new governance in plant protection policies and regulation. These necessary changes must be considered as common target goals in both developed and developing countries and should become a major aspect of agricultural research.

ENDURE's objectives are to:

- Define research priorities on pesticide reduction at the European level
- Pool knowledge, facilities and human resources according to the needs of agricultural extension, industry, and the non-profit sector
- Become a source of reference satisfying farmer needs and societal expectations.

ENDURE is not a decision-making body. However, in a societal and regulatory context increasing restrictions on pesticide use, it will give tools and knowledge to stakeholders who have to make decisions concerning pesticide use reduction, use optimisation and reliance reduction.



... See Also

Potato Case-study (1)



- 🌿 **Description of work**
 - Late blight and early blight
 - Ability of pesticide reduction (cvs, DSS etc.)
 - Analysis of bottle necks→research activities
- 🌿 **Partners: INRA, IHAR, IBMA, DIAS, CNR, ACTA, WUR**
- 🌿 **RA 1.1 Survey ongoing research and facilities**
- 🌿 **RA 1.2 Survey state of the art of control strategies (toolboxes)**
- 🌿 **RA 1.3 Analysis of integrated control strategies (in a workshop)**

Potato case-study (2)



Deliverables

DR 1.1 Report of kick-off meeting (month 4)

DR 1.2 Report of survey ongoing research and facilities (month 9)

DR 1.3 Report on survey state of the art control strategies (month 14)

DR 1.4 Report analysis of integrated control strategies across Europe (month 18)

Milestones

MR 1.1 On basis of DR 1.3→which key factors in toolbox can be useful for other important potato disease, pests, haulm kill

MR 1.2 On basis of DR 1.3→need for additional factors when Q-diseases are involved

Potato case-study (3)



- 🌻 **Activities in coming 18 months**
- 🌻 **Present ENDURE in EuroBlight workshop
2-5 May Bologna, Italy**
 - Ask for update of research projects/facilities (website)
- 🌻 **Write DR 1.1 and DR 1.2**
- 🌻 **Survey toolboxes in 4 potato regions in EU**
- 🌻 **Discussion of these toolboxes and analysis
in Workshop in november/december 2007**
 - Location? 1-2 days?
- 🌻 **Write DR 1.3 and 1.4**