

**Ranman<sup>®</sup>**  
**.....TOP.....** 

**Again a step forwards in late  
blight control...**



Biosciences Europe S.A.

Oktober 2011

# Ranman<sup>®</sup> .....TOP.....

From Ranman A+B to Ranman Top



## Ranman Top in one bottle General

- Liquid formulation SC
- Contains 160 g/l Cyazofamid
- Dose rate: 0.5 l/ha (80 gai/ha)
- RTU (adjuvant built-in)
- First registration: UK, Dec. 2009
- Use: potatoes, tomatoes, melons and cucumbers,...



## Ranman Top

Same spreading effect



Ranman A without B  
(0.2 l/ha)



Ranman A with B  
(0.2 + 0.15 l/ha)



## Spreading effect with Ranman Top

- The spreading effect is **unique** for Ranman.
- The spreading effect brings the active ingredient over **the whole plant**.
- The spreading effect helps Ranman Top to **protect the new growth**.
- The spreading effect gives the farmer the possibility to spray with lower **watervolumes**.

Ranman A+B

Ranman Top

Ranman A+B

Ref



## Ranman Top Spreading effect

With 300 l Water



Ranman AB (+color)



Ranman Top (+ color)



Ref 1 (+color)



Ref 2 (+color)



Ref 3 (+color)



## Ranman Top Spreading effect

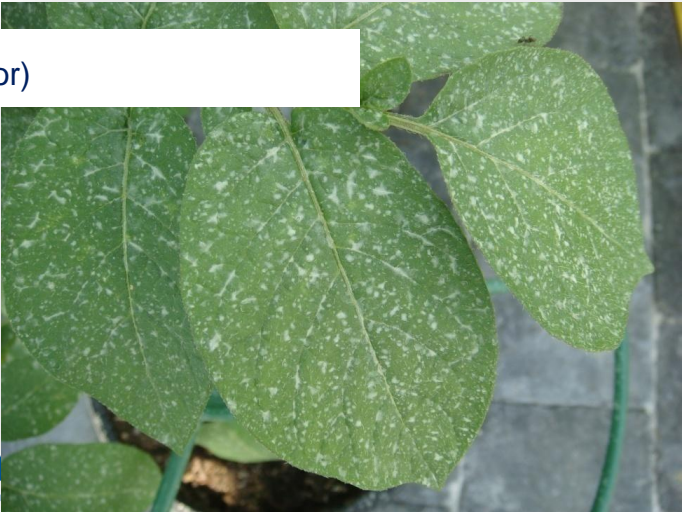
With 150 l Water



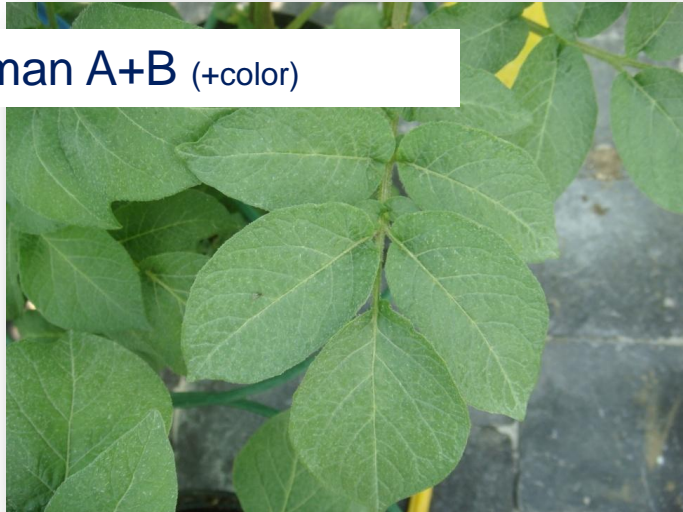
Ref 2 (+color)



Ref 1 (+color)



Ref 4 (+color)



Ranman A+B (+color)

# Ranman<sup>®</sup> .....TOP.....

Efficacy with Ranman Top

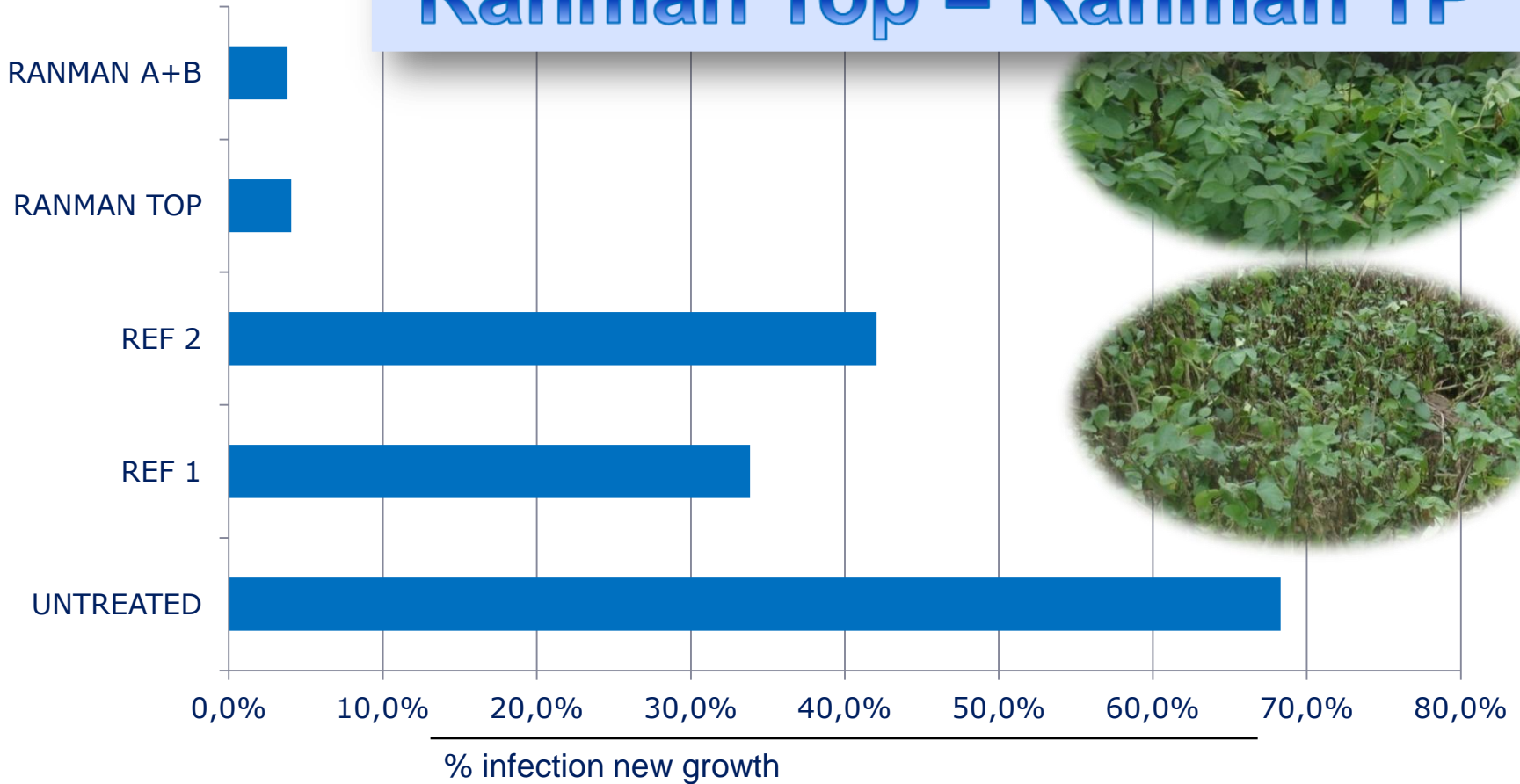




# Efficacy from Ranman TP to Ranman Top

## New growth protection

**Ranman Top = Ranman TP**

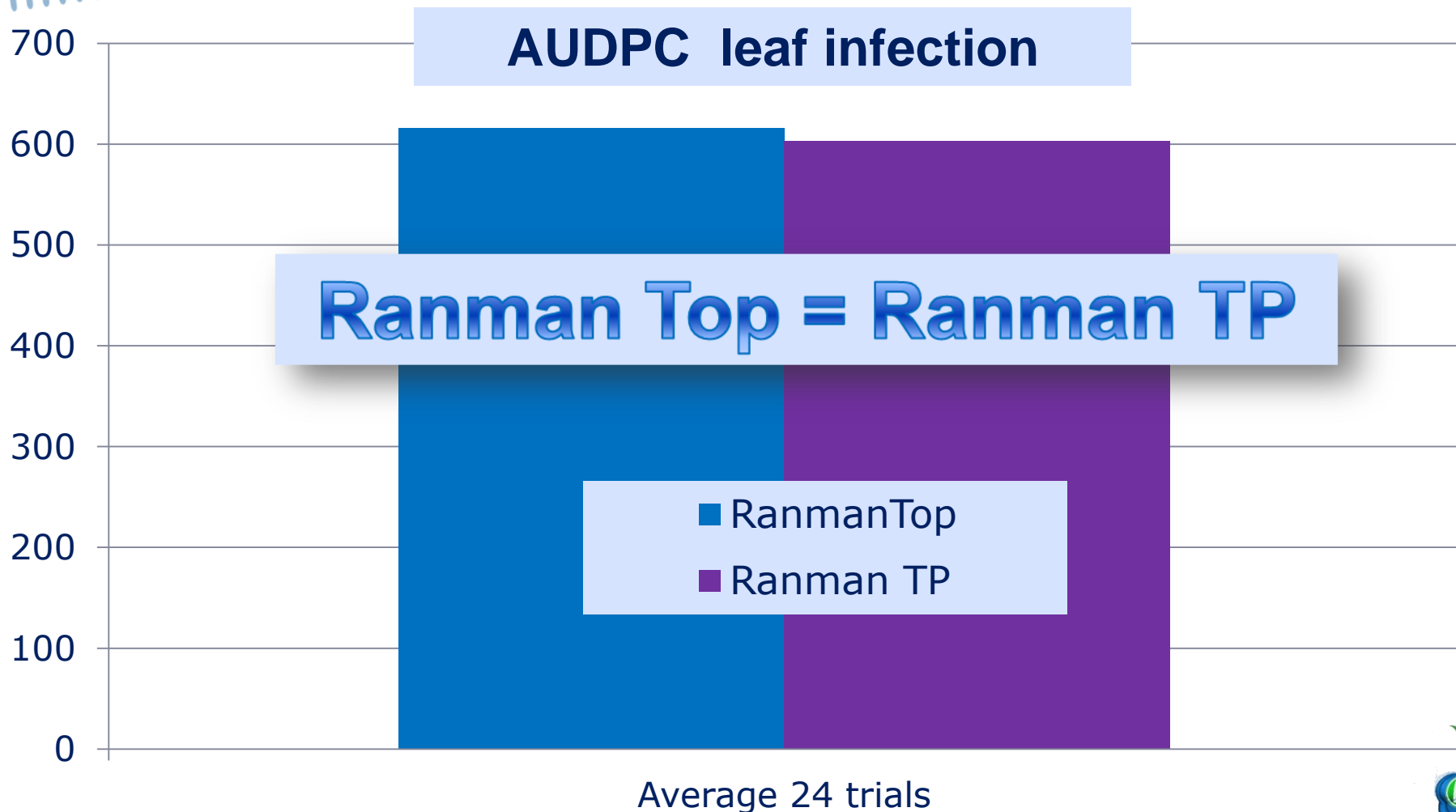


Pot trial

Water Volume:300L/ha, 4 replications

# Efficacy from Ranman TP to Ranman Top

## Leaf protection



24 trials, different countries, treatments from begin till end



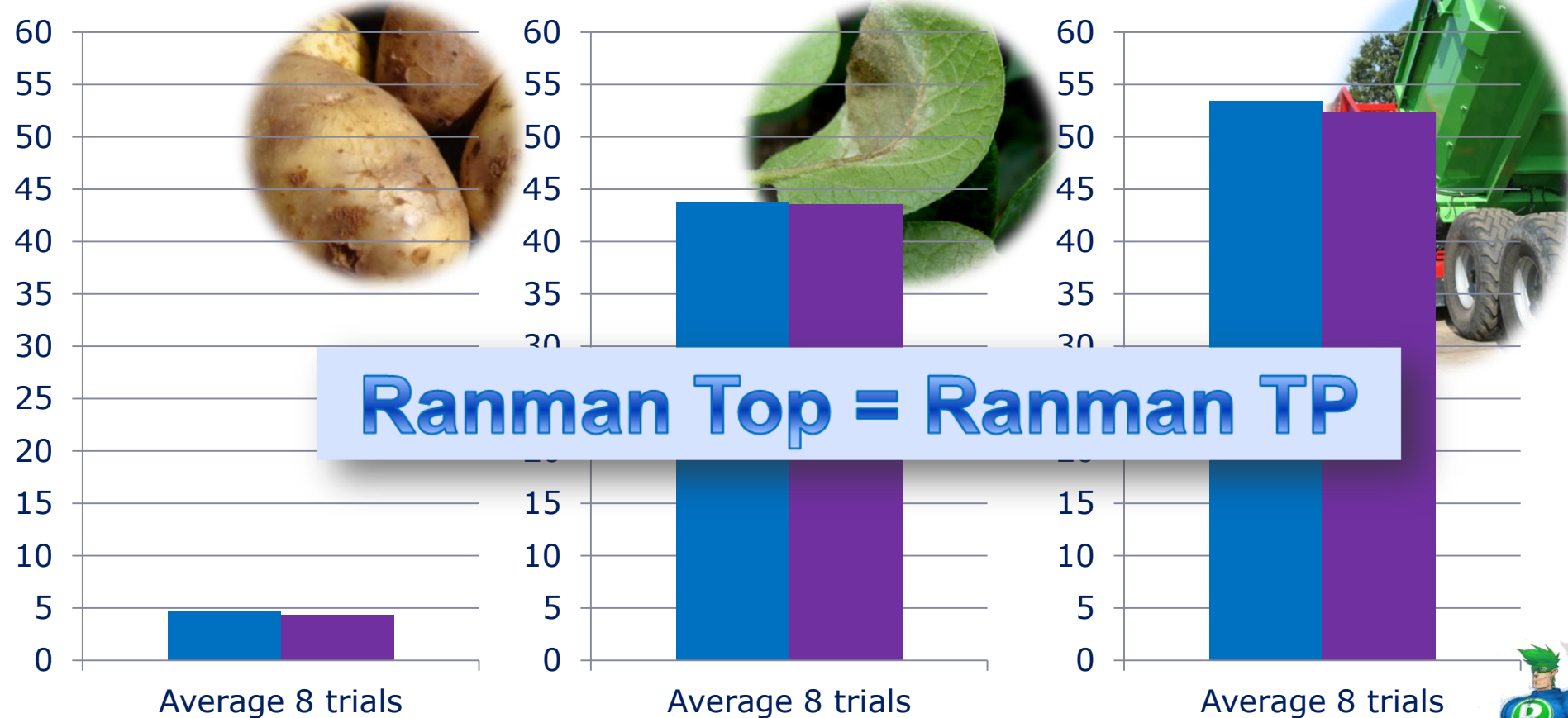
# Efficacy from Ranman TP to Ranman Top

## General protection

### % infected tubers

### % leaf infection

### Yield in tons

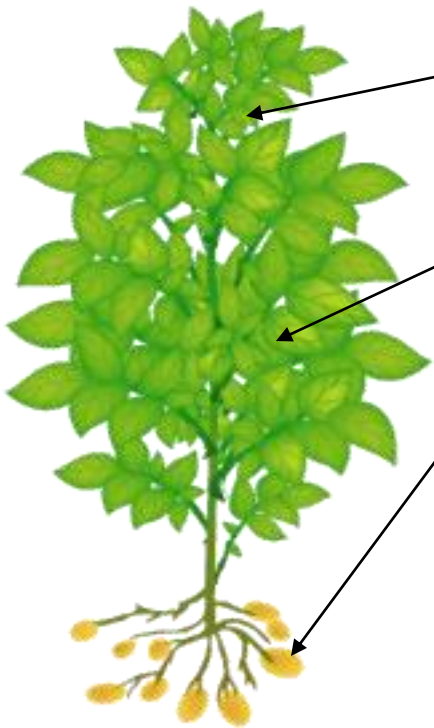




## Ranman Top General overview



- **Top Rainfastness:** trial results demonstrate up till 80 liters and more.
- **Speed of Rainfastness:** applied on a dry leaf, Ranman reaches its rain fastness after 15 min.



- **Grows along** with the new leaf: in the EU table, Ranman<sup>®</sup> gets the same quotation for protection of new growth as the systemic fungicides. (Bologna )
- Strong **protection of the leaf:** with a quotation of 3,8 in the table (Arras, 2010) Ranman<sup>®</sup> is been positioned at the TOP of the leaf protection fungicides.
- Excellent **tuber protection**

### **EXTRA BENEFITS:**

- **Perfect distribution** on the leaf: Ranman<sup>®</sup> provides a perfect distribution and takes care that the active compound is present everywhere.

# Ranman<sup>®</sup> .....TOP.....↗

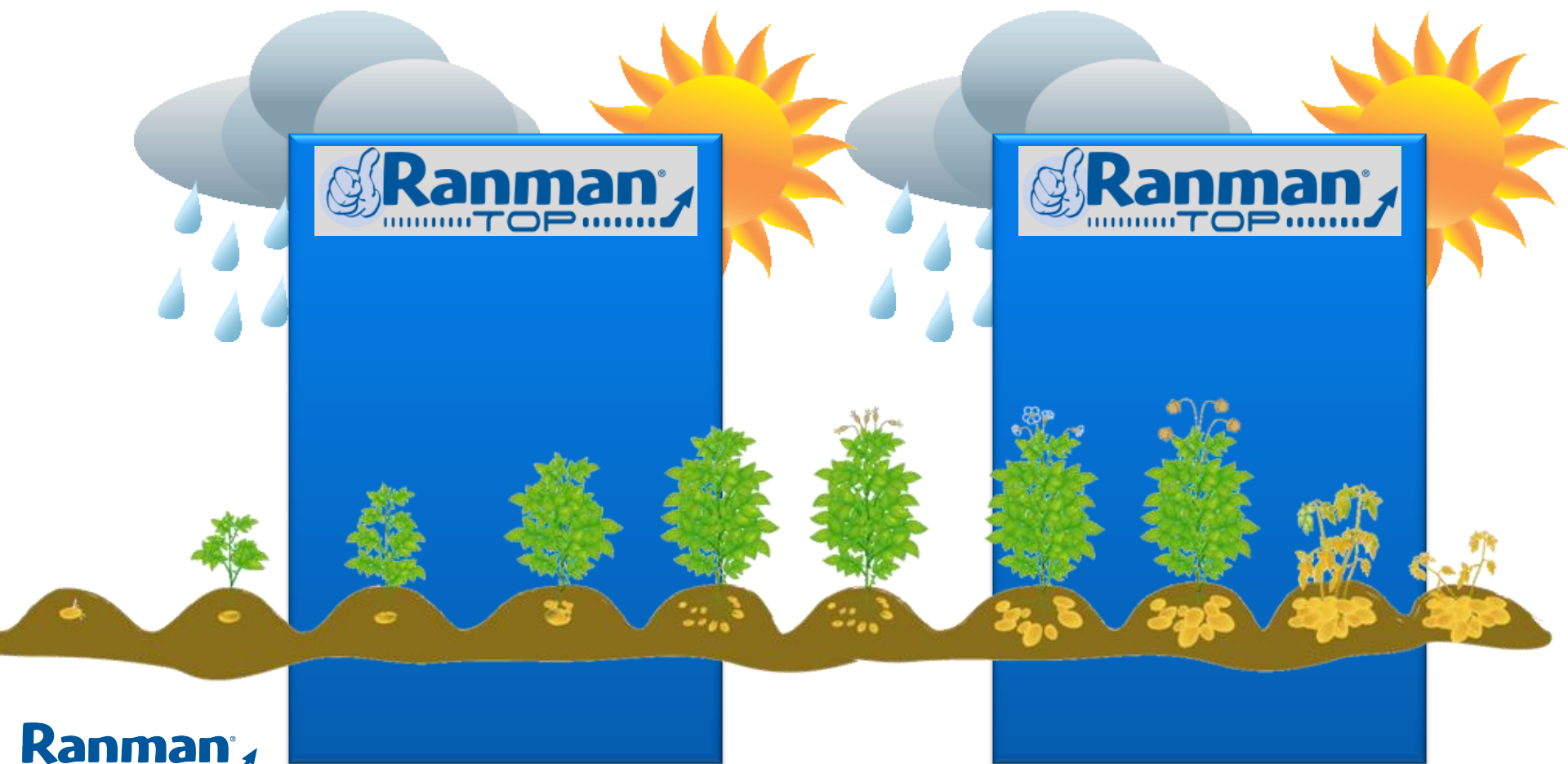
## Positioning Ranman Top



## Ranman in the season

### General positioning

- Ranman Top can be used in all conditions





## Ranman Top, more advantages

- Ranman Top = Ranman TP
  - Same efficacy
  - Same spreading effect
- One bottle
- Easy tank filling
  - Low dose: 0,5 l/ha



# Ranman<sup>®</sup>

.....TOP.....↗

**Again a step forwards in late  
blight control...**

**Thank you for your  
attention**

